

Plan de Prévention du  
 Risque Inondation

**PPRI des pieds de coteaux  
 des waterings**

Commune : AUTINGUES

**Hauteurs d'eau**

Maître d'oeuvre








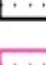

APPROBATION

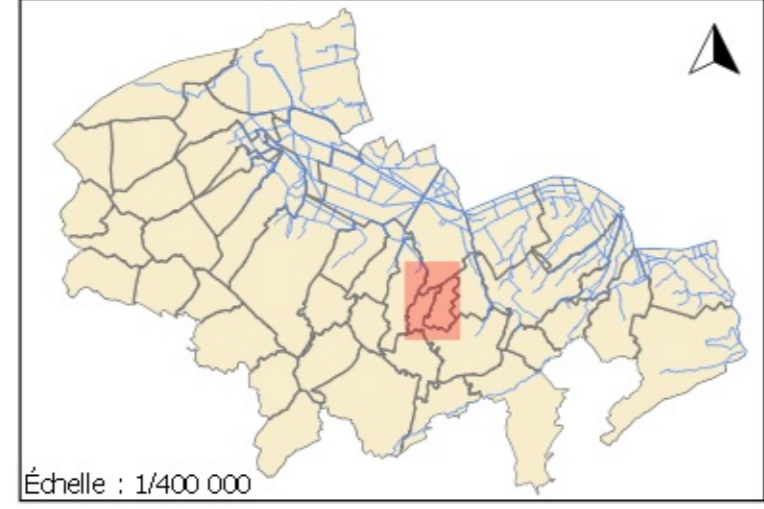
Echelle: 1/5000

**Classes de hauteurs d'eau**

Supérieure à 1,5 m	
Comprise entre 1 et 1,5 m	
Comprise entre 50 cm et 1 m	
Comprise entre 20 et 50 cm	
Inférieure à 20 cm	

**Éléments généraux**

-  Mairie
-  Cours d'eau
-  Limites communales
-  Limites de bassin versant
-  Bâtiments
-  Limites parcellaires
-  Surface en eau
-  Limites du PPRI de la Hem
-  Limites du PPRI du secteur du Calaisis



l\_62DDTM20140002\_HAUTEUR\_S\_062.shp

